

# New Homes for Small Sites

## Churchill Road and Spencer Rise Estate

### Newsletter December 2023

Thank you for your patience as we have been working to appoint a consultant team to prepare a design for new homes on your estate.

We have now appointed the team with Studio Partington as architect, and are excited to introduce them to you at our Meet the Design Team event in the new year.

We have moved the event into 2024 to accommodate the recent by-election in Highgate ward and welcome the new Ward Councillor Lorna Jane Russell. [bit.ly/Highgate-by-election-result](https://bit.ly/Highgate-by-election-result)

### About the proposed new homes

Following a Cabinet decision in February 2023, Camden Council's New Homes for Small Sites team want to work alongside you to develop a design for approximately six supported living homes with a 24-hour support staff presence. As a reminder, when we spoke with local residents about the proposed new homes earlier in the year, these were the key priorities you had for the estate:



Providing bike storage and facilities for residents



Making the estate safer and more secure for residents



Improving play space and green space on the estate



Creating a design that is sensitive to the street and estate



### Meet the Design Team



Tuesday 9 January 2024



St Mary Brookfield,  
85 Dartmouth Park Road  
London, NW5 1SL

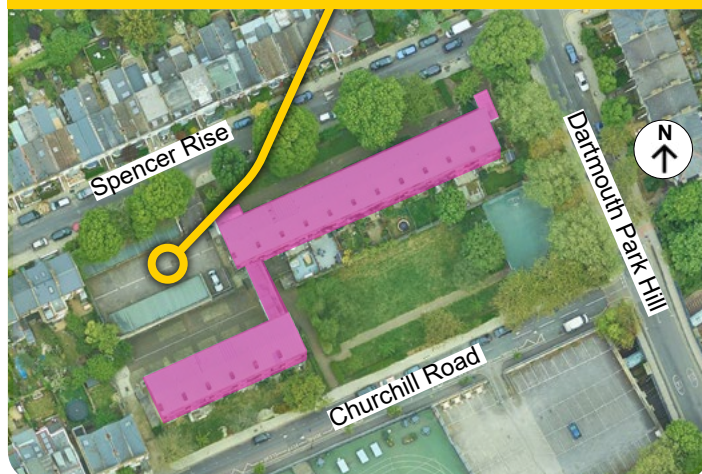


4:30pm - 7:30pm

You are invited to meet our recently appointed team, led by architect Studio Partington. Come along to hear about their experience as they prepare to work with the local community on the proposed new supported living homes for Churchill Road Spencer Rise Estate.

Studio Partington have not started working on detailed designs yet and we want to carry on talking to residents and neighbours as these are developed.

We will be focusing on this location

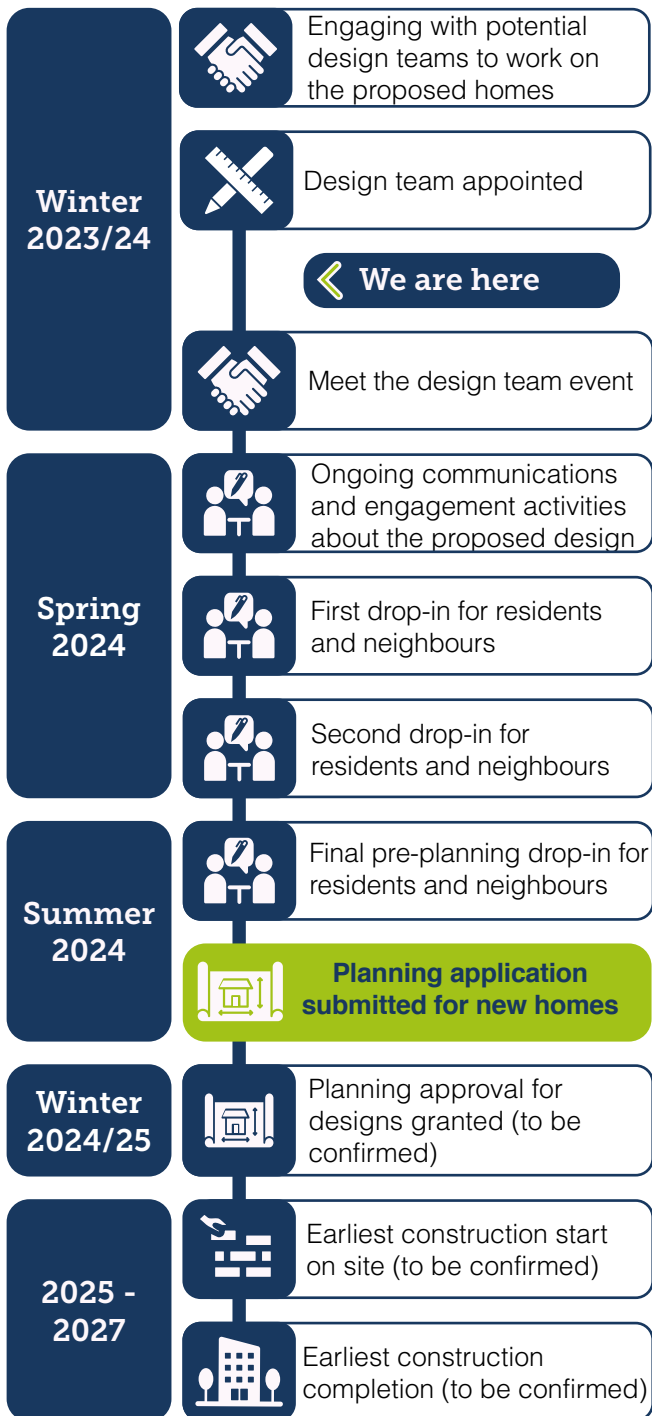


### Existing garages and storage sheds



## Indicative timeline\*

Since we last wrote to you there have been some changes to our indicative timeline. Please see below for the latest information.



\*Indicative timeline may be subject to change

## Introducing Studio Partington

Established in 1998, Studio Partington has developed a reputation for combining design ability with sensitive contextual thinking.

Their work is at the forefront of energy efficient housing design, working for local authorities, housing associations and private developers.

They are involved in projects at all stages from the initial design to the delivery of completed buildings, and when the buildings are completed and occupied.

Their design approach embraces consultation and engagement resulting in environments that are well-considered and thoughtfully put together, strengthening communities and minimising environmental impact.



### Contact us

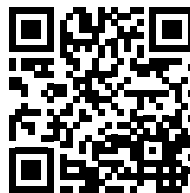


**Billie Dainton - Development Manager**

☎ 020 7974 8792

✉ [NewHomesSmallSites@camden.gov.uk](mailto:NewHomesSmallSites@camden.gov.uk)

If you want to be added to our digital mailing list please contact the Small Sites team and they will arrange this for you.



Visit our website at:

[www.camdensmallsites-csr.co.uk](http://www.camdensmallsites-csr.co.uk)

**Translation?** tradução? traduction? ُترجمة? tłumaczenie? itum ? ترجمة لرا | অনুবাদ? turjumaad? asekyer?

**Large print?**

For any other alternative formats or if you have any questions, please get in touch:

**020 7974 8792**

[NewHomesSmallSites@camden.gov.uk](mailto:NewHomesSmallSites@camden.gov.uk)

## Repairs

Our Estates Team is working to address specific concerns about maintenance and repairs. Contact details for reporting are provided here:

**Phone:** If your repair is an emergency please call **020 7974 4444**, option 3 then 1

**Contact via SMS** in your preferred language. Text us any time on **07360 277909**, and we will reply from 8am to 6pm Monday to Friday excluding Bank Holidays.

**Contact using live chat** at [www.camden.gov.uk/housing-repairs](http://www.camden.gov.uk/housing-repairs) Available from Monday to Friday, 8am to 6pm online